

# 2025 ANNUAL REPORT



**UNITED WAY**  
Lake County

Community Leaders



## Mission

To measurably improve the quality of people's lives in Lake County.

## Vision

United Way of Lake County will become the entrusted champion that drives improved outcomes in our community by funding services that impact health, education, and financial stability.

## Table of Contents

- 1 Letters from Leadership
- 2 Investment in our Community
- 3 Community Impact
- 4 Responsive Impact
- 5 Affinity Groups
- 6 Volunteers
- 8 Financials
- 9 Fueling our Mission: Events
- 10 Campaign Giving
- 12 Leadership Giving Society
- 13 Award Winners (*Inside Back Cover*)

## Campaign Cabinet Members

Erica Acheson-Dunay, Key Private Bank  
Robin Baum, Writer/Editor  
Morris W. Beverage III, Lake County Commissioner  
Melissa Clayton, Huntington Bank  
Kristin Conteen, Greenbridge  
Camilla D'Andrea, Mimi Vanderhaven  
Michelle Graf, The Lubrizol Corporation  
Nancy Guthrie, Volunteer  
Brandi Haught, KeyBank  
Craig Heath, Mentor Public Schools  
Toni Kramer, Volunteer  
Amy O'Brien, TWO MEN AND A TRUCK  
Tiffany Reynolds, Huntington Bank  
Christine Susnik, Sunray Window Films  
Summer Torok, Board of Lake County Commissioners  
Christine Weber, Mentor Area Chamber of Commerce  
Chief Michael Werner, Eastlake Police Department  
Dana Wolfe, Willoughby Western Lake County Chamber of Commerce

## Board Members

### Chairman of the Board

Andy Phelps, S&T Bank

### First Vice Chair

Maria Kula, STERIS

### Second Vice Chair

Terry Kilbourne, Tec Inc. Engineering & Design

### Treasurer

Rick Bumgardner, The Lubrizol Corporation

Sunil Ahuja, PhD, Lakeland Community College\*

Robin Baum, Writer/Editor

Kerry Bliss, Alluvial Private Wealth Cleveland

Josh Bogner, Avery Dennison

Patricia Conrad, VISA

Lindsay Defeo, Leolo Hospitality

Dione DeMitro, United Way of Lake County

Michelle Graf, The Lubrizol Corporation

Brandi Haught, KeyBank

Craig Heath, Mentor Public Schools

Ian Lewis, Little Scholars Early Learning Center

Patrick Mohorcic, Lake Development Authority

George Sari, George Sari Professional Services

Gary Schmitt, SMART Local #33

Christopher Skubby, PhD, Retired\*

Danielle Sindelar, University Hospitals

Joshua Strickland, Dworken & Bernstein Co., LPA

Bryan Thomas, Lighthouse Advisers

Marwin Walling, Painesville City Local Schools

Chief Michael Werner, Eastlake Police Department\*

Kristina Willey, PhD, Griffin Technology Group

Therese Zdesar, QualCare, LLC

\*2026-2027 Board Members

## Board Members Emeritus

Abraham Cantor, Law Office of Abraham Cantor

Melissa Ferguson, Functional Design

Thomas W. Ferguson, State Farm Insurance

Thomas D. Hill, Thomas Hill Investment Services

Rita McMahon, Aislinn Consulting

Robert Schiebli, Iron Workers #468, Retired

Carol-Ann Schindel, CPA, City of Eastlake

## Staff

Dione DeMitro, President & CEO

Jan Blair, Resource Development Associate

Stephanie Devers, Development Director

Tami Lewis, Director of Marketing & Communications

Zach Siebert, Chief Financial Officer

Jen Smyser, Volunteer Manager

David Whittaker, Community Impact Manager



# United We Thrive: A Message to Our Friends

This past year was one of tremendous growth and impact for United Way of Lake County. Together, we were able to reach more individuals and families than ever before – something that only happens when a community comes together to care for one another and support our most vulnerable neighbors.

In 2025, we expanded our work through new and enhanced initiatives designed to meet emerging needs in real time. For the second year in a row, we were proud to support our community's Back-to-School Bash through a countywide clothing drive and by operating a free on-site store to help children head back to school with confidence and dignity.

We also stepped into leadership roles during some very difficult moments for our community. United Way helped lead Lake County's Code Blue and Heat Index Alert efforts and, at times, even opened our doors as an emergency shelter to provide safety and relief for individuals facing extreme cold weather conditions.

When the SNAP crisis affected so many local families, our community responded in an incredible way. Together with our partners, we mobilized food donations, distributed emergency resources, and worked quickly to help ensure families did not go without. We also brought community leaders together to launch both hunger and poverty coalitions focused on creating long-term, collaborative solutions to some of the biggest challenges facing our county.

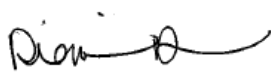
None of this would have been possible without our volunteers. This year, more people than ever gave their time and talents to support this work, allowing us to expand our reach and deepen our impact across Lake County.

While we are proud of what we accomplished together this year, we also know there is still more work to do. With your continued support, we remain committed to building a stronger, more connected, and more resilient community where everyone has the opportunity to thrive.

With gratitude,



**Andy Phelps**  
United Way of Lake County Board Chair  
S&T Bank



**Dione DeMistro**  
President & CEO  
United Way of Lake County



As a proud member of the Lake County business community, it was truly an honor to serve as the 2025 Campaign Chair for United Way of Lake County (UWLC). Throughout my career, I've had the opportunity to see firsthand what can happen when people come together with a shared purpose—and this community continues to show up in the most generous and impactful ways.

I am especially grateful for our dedicated Campaign Cabinet, whose leadership, energy, and commitment were the driving forces behind this year's efforts. Their passion for making a difference across Lake County was both inspiring and essential to our success.

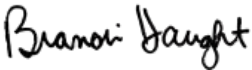
I also want to extend my sincere appreciation to the UWLC staff. There were several pivotal moments throughout this campaign where they truly stepped up, demonstrating resilience, dedication, and heart in everything they do. Their behind-the-scenes efforts did not go unnoticed and are critical to the impact we were able to make. I am equally grateful for the leadership of our President & CEO, Dione DeMistro, whose vision and commitment continue to guide this organization forward.

Supporting UWLC's mission is deeply personal to me. Through my work in business banking, I've seen the challenges many individuals and families face—and I've also seen the incredible impact that access to resources, support, and opportunity can have. At KeyBank, we have long believed in strengthening the communities we serve, and I'm proud to be part of an organization that values giving back and investing in meaningful change.

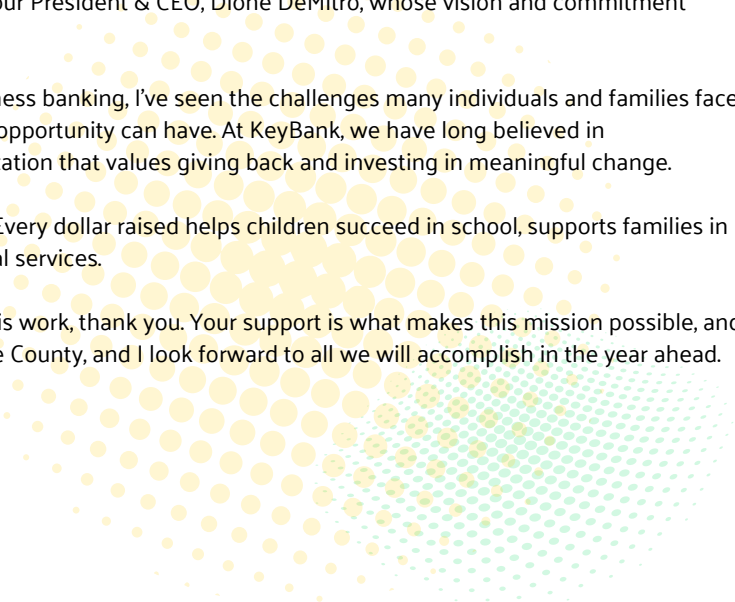
This campaign is more than fundraising—it's about creating real, lasting impact. Every dollar raised helps children succeed in school, supports families in times of need, and ensures our most vulnerable neighbors have access to critical services.

To every donor, volunteer, partner organization, and advocate who joins us in this work, thank you. Your support is what makes this mission possible, and it is a privilege to stand alongside you. Together, we are building a stronger Lake County, and I look forward to all we will accomplish in the year ahead.

In gratitude,



**Brandi Haught**  
United Way of Lake County Campaign Chair  
KeyBank



# \$1,542,914 INVESTED INTO OUR COMMUNITY

## \$900,000 Invested from Community Impact Fund

### Youth Opportunity

- \$75,000 Crossroads Health, Ohio Early Intervention Program
- \$16,500 Lake County YMCA, Childcare Financial Assistance
- \$18,000 Lake County YMCA, Summer Learning Loss Prevention
- \$35,000 Lifeline, Inc., Dolly Parton Imagination Library
- \$10,000 Starting Point, Lake County Devereaux (DECA) program
- \$30,000 The Salvation Army Corps Community Center, Youth Learning Zone
- \$15,000 Torchlight Youth Mentoring Alliance, Community-Based Program

**\$199,500 Total Allocated**

### Financial Security

- \$10,000 Catholic Charities, Hispanic Outreach Program
- \$15,000 Lake County Free Clinic, Case Management
- \$15,000 Lake-Geauga Habitat for Humanity, Repair Program
- \$20,000 Lifeline, Inc., Security Deposit Program
- \$5,000 Lifeline, Inc., Volunteer Income Tax Assistance Program
- \$78,000 Project Hope for the Homeless, Shelter & Services
- \$22,000 The Salvation Army Corps Community Center, Red Shield Homeless Services Program

**\$165,000 Total Allocated**

### Healthy Community

- \$22,700 Birthright, Baby Formula Program
- \$30,000 Cleveland Rape Crisis Center, Services for Survivors
- \$7,500 Fine Arts Association, Creative Arts Therapies
- \$98,700 Forbes House, Domestic Violence Shelter & Services
- \$5,000 Kidney Foundation of Ohio, Medication and Transportation Assistance
- \$35,000 Lake County Council on Aging, Congregate Meals
- \$20,000 Lake County Free Clinic, Dental Services
- \$100,000 Lake County Free Clinic, Medical Services
- \$35,000 Lake County YMCA, Financial Assistance
- \$50,000 Lake-Geauga Recovery Centers, Residential Childcare
- \$12,500 Lifeline, Inc., Guardianship Program
- \$16,100 NAMI Lake County, Ending the Silence Program
- \$10,000 Signature Health, Geriatric Care Liaison
- \$24,000 The Salvation Army Service Units, Emergency Services
- \$22,000 The Salvation Army Corps Community Center, Emergency Services
- \$12,000 Wickliffe City Schools, Family Resource Center

**\$500,500 Total Allocated**

### Community Resiliency

- \$35,000 Lifeline, Inc., 211 Referral Service
- \$35,000 Total Allocated**

## \$642,914 Additional Community Investments\*

#### \$217,057 - Value of Volunteer Services:

- \$125,731 Direct Impact Initiatives
- \$91,326 Event, Admin, and Other Support

#### \$174,121 - Direct Food Investments:

- \$88,873 Food Purchases to Stock 35+ Pantries
- \$84,618 Value of Donated Food Distributed to 35+ Pantries
- \$630 Support of Fresh Produce Access Through SNAP Tokens at the Painesville Farmers Market

#### \$120,469 - Donor-Directed Impact to Other Nonprofit Agencies

#### \$46,320 - Back-to-School Bash Clothing Distribution

#### \$45,000 - Responsive Fund & Code Blue Grants

#### \$34,347 - Student-Led Initiatives:

- \$21,000 Willoughby-Eastlake City Schools Youth Leadership
- \$10,000 Youth United Way Grants
- \$3,347 Perry Service Learning Power Packs

#### \$5,600 - Affinity Group Christmas Gift Purchases:

- \$4,400 Emerging Leaders:  
For Children at the Emma Caley Receiving Home
- \$1,200 Women United:  
For Clients of Lake-Geauga Recovery Centers' Oak House

\*Values of donated food, clothing, and volunteer time are based on nationally recognized nonprofit valuation guidelines and standard industry benchmarks.



# COMMUNITY IMPACT

## Day of Caring: June 18, 2025

During United Way of Lake County's 33rd Annual Day of Caring, 237 volunteers from local businesses and organizations completed 24 community projects for 14 local nonprofits, contributing more than 1,400 volunteer hours. Their efforts helped ease financial burdens for nonprofits, allowing more resources to be directed toward their core missions of serving those in need.



## Emergency Weather Initiatives: Code Blue & Heat Index Alerts

UWLC coordinated Lake County's emergency weather response in partnership with the Lake County ADAMHS Board and Lifeline, Inc., bringing together community partners to provide shelter, safety, and support for residents most vulnerable during periods of extreme cold and heat.

A total of 19 Code Blue nights were activated due to dangerously cold temperatures, resulting in 255 overnight stays, with nightly attendance ranging from 6 to 23 guests. Support for this effort included assistance from The Sub Zero Mission, as well as 19 volunteers who covered 99 shifts and contributed 586 volunteer service hours.

In addition, 12 Lake County public libraries served as cooling shelters, providing residents with safe spaces and relief during periods of excessive heat when Heat Index Alerts were issued.

## Willoughby-Eastlake Public Schools Youth United Way

UWLC led an on-site Youth United Way program for 18 students from North High School and South High School. Following a needs assessment and grantmaking process, students evaluated community needs and awarded grants to local nonprofits using the \$21,000 they raised in support of the initiative.

## Free Lunch & Learn - Discover Health & Human Resources for Your Employees: January 14, 2026

UWLC convened a panel of experts to discuss how employers can support employees and their families during challenging times, including financial hardship, food insecurity, mental health concerns, and other barriers to stability. Attendees learned about critical nonprofit services available in Lake County and how to connect their workforce with the resources and support they may need.

## Back-to-School Bash: August 2, 2025

UWLC supported the 2025 Back to School Bash (BTSB), an annual collaborative community event spearheaded by the Lake County Family and Children First Council, brought to life through the commitment and partnership between a multitude of agencies, businesses, and organizations. The event was held at Harvey High School in Painesville and was open to all Lake County families in need. The purpose of the BTSB is to help Lake County students start the school year prepared, confident, and ready to succeed by providing essential school supplies, backpacks, clothing, and community resources, including haircuts, vision screenings, immunizations, dental services and more.

For the second consecutive year, UWLC hosted a clothing drive in preparation for the pop-up clothing store at the BTSB. TWO MEN AND A TRUCK generously donated hundreds of boxes to support the sorting and organization of donated items. Our Future ReUse then transported these items to the gym at Harvey High School, where UWLC set up and ran the pop-up clothing shop filled with free clothing and essentials. Available items included new socks and underwear, as well as gently used clothing, outerwear, accessories, and shoes for children and their families.

**A Total of 184 Volunteers Contributed More Than 800 Hours Resulting in the Following Impact:**

- 11,288 items were available to shop
- 1,222 persons were served



## Youth United Way: December 12, 2025 Graduation

Youth United Way is an annual, youth-led initiative that helps students better understand the needs facing our community, the services available to address them, and their own role in creating positive change. The program fosters social responsibility while encouraging active engagement in community problem-solving, as students work collaboratively through the same needs assessment process used by UWLC's allocations committee to determine grant funding.

The Youth United Way Class of 2025 included 32 students from North, Harvey, Lake Catholic, Mentor, and Riverside high schools. Over the course of six sessions held from October through December, students explored community needs, evaluated local nonprofit work, and ultimately awarded \$10,000 in grants to Lake County nonprofits.



# RESPONSIVE IMPACT

## Initiatives

### 34th Annual Feed Lake County Food Drive & Fundraiser

- \$52,000 raised
- 12,675 lbs. of food donated
- 32 supporters ran food drives

#### Donor Spotlight - Top Donors:

- 3,974 lbs. Mentor High School
- 3,542 lbs. Marous Brothers Construction



48  
Providers  
Supported  
by UWLC's  
Year-Round  
Food Pantry

# 214,282

Total Meals Provided

126  
Food  
Drives  
Held by  
Supporters



## Initiatives

### Thanksgiving Food Distribution

- 923 turkeys distributed
- 16,740 lbs. of fixings and food distributed

#### Turkey Donor Spotlight - Top Donors:

- 200 Buyers Products Company
- 99 PCC Airfoils
- 62 Aexcel Corporation
- 32 Ranpak

## Hunger Coalition

UWLC also combats hunger through its newly launched Hunger Coalition, which brings together food pantries, shelters, schools, and other partners to address food insecurity via quarterly meetings to share resources, exchange best practices, and collaborate on sustainable solutions. Members can be found by scanning the QR Code.



## Why?

Nearly one-third of Lake County households struggle to afford basic needs, including many hard-working families with incomes above the poverty level who are unable to make ends meet. In fact, 25% of households fall into this category, while an additional 7.5% live in poverty. Scan the QR Code for more information on hunger in Lake County.



## Corporate Partners Strengthening Food Access

\$50,000 - Grant from The Jerome T. Osborne and Georgeanne S. Osborne Charitable Trust to alleviate hunger.

\$25,000 - Contribution from Buyers Products Company awarded as an incentive for a company match in support of UWLC's 34<sup>th</sup> annual food drive and fundraiser.

## Fueling the SNAP Response

UWLC's response to the SNAP crisis was made possible through the generosity of donors and the following grants recognizing UWLC's trusted role in addressing critical needs from:

- Cleveland Foundation
- Lake County Community Development Block Grant

#### Donor Spotlight - Top 5 Donors:

- 1,300 lbs. Adventure Subaru
- 1,040 lbs. STERIS
- 965 lbs. Ridge Elementary School
- 957 lbs. Lake County Board of DD
- 915 lbs. Lake-Geauga Habitat for Humanity

## SNAP Crisis Response

The disruption in SNAP benefits affected an estimated 17,141 Lake County recipients, including 6,200 children and 2,500 seniors.

As a leader in community action, UWLC responded by quickly coordinating several initiatives to feed Lake County's most vulnerable. This included the establishment of an emergency pop-up food distribution, held the evening of November 13, 2025.

### Emergency Pop-Up Food Distribution

**Distributed:** \$13,345 worth of shelf-stable food and 14,000 lbs. of fresh produce and bread.

**Household Impact:** 359 vehicles were served, representing an estimated 1,233 individuals, including 532 children, 574 adults, and 127 adults ages 60+.

## Additional SNAP Impact

Beyond this, 3,422 individuals benefited from special distributions of food provided to agencies serving low to moderate income individuals.



An additional \$5,000 in food was provided to the Willoughby-Eastlake City Schools for distribution.

UWLC also partners with local school systems to help establish food distributions and actively supports this through volunteer engagement.

# AFFINITY GROUPS

## Women United of United Way of Lake County



Andrea Musial, PhD  
2025 Women United Chair



Jennifer Edgell  
2026 Women United Chair

Women United (WU) is a dynamic network of like-minded women who are passionate about making a difference and work to positively impact the lives of Lake County women and children through the efforts of membership, volunteering, and philanthropy.

In addition to their volunteer work, WU hosts Speaker Series and Socials with a Purpose, where guests bring donations to each nonprofit cause the group adopts. Their signature event is their Women's Winterfest & Holiday Food Tasting fundraiser.

Over the last 11 years, WU has proudly awarded grants totaling over \$532,000 through United Way of Lake County's Community Impact Fund. **This includes \$110,000 in grants allocated as part of the 2025-2026 funding cycle:**

- **\$14,643 Birthright**, Baby Formula Program
- **\$14,643 Cleveland Rape Crisis Center**, Services for Lake County Survivors
- **\$7,500 Fine Arts Association**, Creative Arts Therapies
- **\$14,643 Forbes House**, Domestic Violence Shelter
- **\$14,643 Lake County YMCA**, Summer Learning Loss Program
- **\$14,643 Lake-Geauga Recovery Centers**, Residential Childcare
- **\$14,643 Lifeline, Inc.**, Dolly Parton Imagination Library
- **\$14,642 The Salvation Army Corps Community Center**, Youth Learning Zone

### Women United Highlights

**Signature Fundraiser:** Women's Winterfest & Holiday Food Tasting

**Speaker Series:** Let's Grow Together at Let's Meet Event Space

**Speaker Series:** Turning Tragedy into Prevention - Protecting our Children from Online Threats featuring Tim and Tamia Woods

**Social:** Bottles, Boards, & Boutiques at Mentor Harbor Yacht Club

**Social:** Paint & Pour Barnside Mixer at The Charlton Abbott

**Social/Volunteerism:** Summer Potluck and Clothes Sorting for UWLC's Back-to-School Bash Clothing Drive

**Volunteerism:** Back-to-School Bash Clothing Room Prep

**Volunteerism:** Salvation Army Back-to-School Bash Backpack Packing

**Volunteerism:** Reading Program at The Salvation Army

**Volunteerism:** Mentoring Clients of Lake-Geauga Recovery Centers' Oak House and Neveah Ridge

**Volunteerism:** Christmas Gifts and Holiday Party for Clients of Lake-Geauga Recovery Centers' Oak House and Neveah Ridge

## Emerging Leaders of United Way of Lake County



Lindsay Defeo  
2025-2026 Emerging Leaders Chair

Emerging Leaders of United Way of Lake County (EL) seek to be a catalyst for change in the lives of Lake County youth through leadership, advocacy, knowledge, and education to facilitate positive behaviors that will create tomorrow's leaders. They also work to develop, connect, and empower young professionals through a mix of professional development opportunities, including networking and social activities, speaker series, and volunteer opportunities.

Emerging Leaders hosts two signature events each year: a 4 Under 40 recognition ceremony and a golf outing fundraiser. Proceeds from these events support community grants awarded through both Emerging Leaders and Youth United Way.

Over the last ten years, EL has proudly awarded grants exceeding \$231,000. **This includes \$45,000 in grants allocated as part of the 2025-2026 funding cycle:**

- **\$8,750 Lifeline, Inc.**, Dolly Parton Imagination Library Early Childhood Literacy Program
- **\$8,750 NAMI Lake County**, Ending the Silence Program
- **\$8,750 The Salvation Army**, Youth Learning Zone
- **\$8,750 Torchlight Youth Mentoring Alliance**, Community-Based Mentoring Program
- **\$10,000 Youth United Way**, Grant Award Allocation Program

### Emerging Leaders Highlights

**Signature Fundraiser:** Golf Outing at Black Brook Golf Course

**Fundraiser:** 4 Under 40 Awards Ceremony

**Social:** Brewed Connections (Winter) - Coffee at 1922 Coffee & Brew

**Social:** Mixer at Westel's Speakeasy & Cocktail Bar

**Social:** Brewed Connections (Spring) - Coffee at 1922 Coffee & Brew

**Volunteerism:** Back-to-School Bash at Harvey High School

**Volunteerism:** UWLC's SNAP Crisis Response

**Volunteerism:** Fulfillment of every child's Christmas gift wish list from the Emma Caley Receiving Home of the Lake County Department of Job & Family Services

“At the end it's not about what you have or even what you've accomplished. It's about who you've lifted up, who you've made better. It's about what you've given back.” — Denzel Washington

# VOLUNTEERS

## UWLC Benefited From Over 6,200 Volunteer Hours in Support of our Community

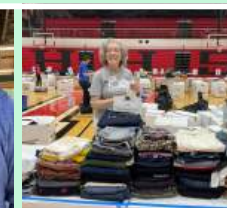
This volunteer roster reflects the many individuals who power our mission. From our Board of Directors, Campaign Cabinet, Employee Campaign Managers, and committee members to the dedicated volunteers behind our affinity groups, events, and initiatives, we are grateful to all, including nearly 300 additional volunteers who participated in our Day of Caring. We sincerely apologize for any inadvertent omissions.

Susan Abazia	Kate Bruner	Shawn Douglas	Jessica Gustafson	Kathy Knuebel	Christine Matthews
ABB Team	Jackie Bruner	Kyle Dressig-Kitner	Nancy Guthrie	Nathan Knutty	Rachelle McCallister
Erica Acheson-Dunay	Dana Buckler	Patricia Drewery	Mikayla Habina	Lindsey Koch	Madison McCarthy
Crystal Adams	Donna Bullis	Amy DuFour	Meg Hagan	Afia Konadua	Deneen McChendon
Cindy Adie	John Bullis	Beverly Dzomba	Deb Hall	Mimi Konicki	Michelle McClure
Diane Ager	Rick Bumgardner	Vicki Eby	Mayor Chris Hallum	Becky Kosik	John McCreery
Sunil Ahuja, PhD	Heather Bunkin	Joann Eckart	Jennifer Hancock	Chris Krajnyak	Diana McCubbin
Beth Andrus	Shirley Burgett	Jennifer Edgell	Brandi Haught	Toni Kramer	Heather McCue
Pete Aranavage	Marge Burnett	Anita Edwards	Justin Haught	Alyson Krashiewski	Chuck McDuffie
Ann Marie Armario	Karen Burton	Mel England	Craig Heath	Payten Krauss	Jessie McKnight
Tara Arnold	Kathleen Buse, PhD	Kaeden Estok-Kline	Valerie Helmik	Jennifer Krocak	Kristen McLaughlin
Carolyn Arwood	Regina Butsko	Alex Estvanko	Kelly Hendrix	Beth Kruse	Sandy McLinden
Avery Dennison Team	Andrea Byrne	Janet Evangelista	Kelley Hendry	Trudy Kucharski	Angi McMichael
Sarah Baggott	Ben Capelle	George Evangelista	Zoe Herzenstein	Maria Kula & sons	Sharlyna McQueen
Jessie Baginski, PhD	Tera Carlson	Nicholas Evangelista	Tim Hickey	Cheryl Kuonen	Paster McQueen
Dee Baker	Valerie Carr	Amy Fatica	Alyssa Hilditch	Pam Kurt	Kevin McSween
Alyea Barajas	Rhonda Carter	David Federico	Chalie Holmes	Tiffany Kustron	Joe Mecozzi
Sydney Barker	Kylynn Cartor	Bev Ferez	Judy Holmes	Lake Co Board of DD	Leesa Mecozzi
Christine Barnes	Debbie Casper	Samantha Ferrato	Nicole Houser	Emily Lammers	Lani Menchaca
Danielle Barnes	Lori Caszatt	Fifth Third Bank Team	Elizabeth Howerd	Gloria Lane	Elliot Menchaca
Quin Bateman	Melissa Clayton	Oakley Fillbach	Chris Huber	Dorothy Lang	Maddie Menchaca
Robin Baum	Melissa Cline	Taylor Fillbach	Cathy Humphrey	Dennis Laugherty	Abel Menchaca
Dr. Stephen Baum, MD	Marissa Clutter	Gina Fletcher	Huntington Bank Team	Lawrence Laurenty	Dallana Mendoza
Sharon Becker	Carla Coleman	Addison Fletcher	Brittany Huston	Patricia Lausin	Linda Meredith
Paige Beddick	CB Connolly	Annabelle Fletcher	Zerina Hutchinson	Judith Lavery Rozic	Megan Mester
Doris Behnke	Patricia Conrad	Ellen Forbus	Lisa Imondi	Beverly Lee	Carol Meyer
Alex Benn	Holly Cope	Doug Forcht	Rachel Jeavons	Ramone Lescano	Jon Miller
Rebecca Bennett	Gwen Corban	Brian Forney	Christopher Jochum	Diana LeSieur	Sherry Miller
Angelita Bennett	Christina Corsi	Tracey Forney	Melissa Johns	Jim Levine	Jessica Miller
Don Berlin	David Cowen	Robert Fowler	Ariel Johnson	Gibson Lewis	Cassidy Miller
Jennie Best	Ashley Cozzens	Tony Frank	Michele K. Johnson	Ian Lewis	Kelly Minnick
Kari Betchik	Leah Crumble	Meredith Fratantonio	Tricia Johnston	Doug Lewis	Lydia Miocic Vasile
Morris Beverage III	Kim Crumble	Anna Galipo	Shelby Jones	Daniel Lieb	Linda Moats
Laurie Bevington	Deanna Cumberland	Colleen Gallagher	Gia Jones	Teri Lilley	Jared Mohler
Dessa Biaglow	Camilla D'Andrea	Dayna Gallik	Ed Jones	Angela Little	Patrick Mohoric
Caley Biddinger	Jennifer Danner	Chris Galloway	Kerry Jonke	Ellison Lombardo	Amy Moody
Steve Billhardt	Jen Danuer	Katie Galloway	Marien Kaifesh	Kathy Longo	Nyesha Moore-Samad
Bronte Billings	Mickey Darr	Gonzalo Garcia-Pedroso	Eric Kaleal	Cindy Lord	Michael Moritz
Cathy Bishop	Elia De La Garza, M.Ed	Joelle Geiger	Cristen Kane	Lubrizol Team	Vicki Morley
Cory Black	Craig Deas	Bethany Germano	Steven Katko	Wesley Luttrell	Matt Mormile Team
Jenifer Black	Chris DeBaggis	Zenha Gerson	Melanie Katona	Adriayna Lyle	Jacob Morris
Carolyn Blackwell	Amy DeBaltzo	John Geszler	Rose Ann Kay	Sarah Madsen	T. Morton
Jan Blair	Lindsay Defeo	Claire Giancola	Maureen Kelly	Juanita Magrans	Holly Mosnik
Kerry Bliss	Larry Defeo	Ryan Gilkerson	Terry Kilbourne	Ann Mahler	Tonya Mullen
Josh Bogner	Gabriel DeMito	Angie Goman	Meghan King	Kevin Malecek	Alondra Muniz
Erin Bolyard	Christian DeMito	Julie Goodman	Joshua King	Karen Manly	Kirsten Murdock
Therese Bradshaw	Sharon Detering	Larrese Goodmann	Destiny King	Maria Manocchio	Cathy Murphy
Linda Brentar	Emily Dewey	Michelle Graf	Carresa King	Christine Margalis	Andrea Musial, PhD
Yvonne Brickell	Jim DiFrongia	Adrienne Green	Carolyn Kinkoph	Noreen Marlowe	Mia Musial
Jason Bridges	James Dillard	Jack Gregorin	KJ Fasterners Team	Greg Marlowe	Davey Musial
Lindsay Brown	Aubrey DiPofi	Susan Gregory	Jack Kleigl	Ashley Marrie	Jennifer Mussig
Sarah Brown	Montana Distelrath	Jen Grill	Alex Kliegl	Scott Marsh	Mandy Nagle
Liam Brown	Stevie Dohm	Tawnee Gucciardo	Gianna Kliegl	Kathy Martin	Amy Nakel
Ella Brown	Carrie Dotson	Katelynn Gurbach	Tom Klish	Pam Martin	Connie Nazario

# VOLUNTEERS

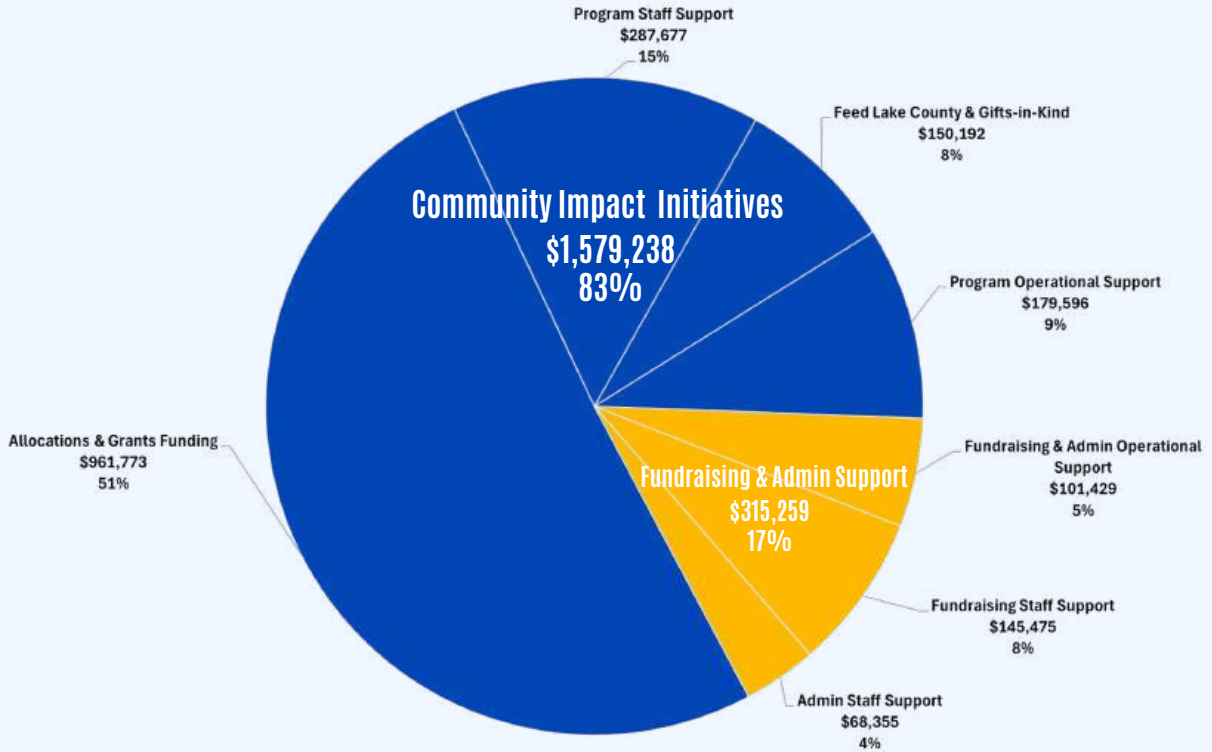
Over 6,200 Volunteer Hours Fueled UWLC's Work

Jodi Nead	Rachael Parry	Michael Rassi	Jennifer Schuller	Jane Steger	Precious Verdier
Jason Nedley	Krishna Patel	James Rauckhorst	Charles Schulz	Camille Steinberger	Jennifer Vieland
Austin Nelson	Mate Paulic	Aaliyah Raymo	Mary Schulz	April Stewart	VISA Team
Jeff Nemecek	Lindsey Pavelka	Rea Advisory Team	Judy Schulz	Rita Stickle	Judy Vogler
Mary Nemecek	Lydia Pavlic	Bre Reckart	Joshua Sebrasky	Erin Stockdale	Thaddeus Wagenlander
Candice Neubert	Michael Pennington	Teresa Reid	Michelle Seifert	Elliot Stone	Ava Wakeman
New Hope Baptist	Kelly Penzenik	Jen Reiss Blatnik	Michael Semick	Steve Stone	Rick Walker
Church (NH):	Bret Percic	Luci Remchick	Amy Senning	Nancy Stoneman	Marwin Walling, Jr.
Angelita (NH)	Sue Perrier	Tiffany Reynolds	Mia Severino	Kathy Strancar	Lanny Ware
Tamika (NH)	Mike Perry	Terri Richter	Erica Shaw	Riley Strickland	Bella Wargo
Sandy (NH)	Patty Perry	Jackie Riggins	Kylie Sheehan	Joshua Strickland	Sharon Warholc
Tamara (NH)	Susan Pestello	Major John Riley	Liviana Sheridan	Michael Sukalac	Margaret Warner
DeeDee (NH)	Emily Pestello	Major Alma Riley	Jennifer Showman	Christine Susnik	Curtis Ways
Miracle (NH)	Helen Petersburg	Loren Rireva	Jenna Siebert	Donna Swan	Christine Weber
Amber (NH)	Mary Petras	Jerrie Lee Rispoli	Liliana Siebert	Judy Szabo	Chief Michael Werner
Elizabeth (NH)	Juliana Petti	Loren Rivera	Isaac Siebert	Lisa Tankovich	Olivia West
Juliana Nichols	Andy Phelps	Michelle Roadman	Elijah Siebert	Bill Tanski	Charles Whittaker
Greg Nicholson	Cheyenne Phelps	Martha Robb	Levi Siebert	Jackie Terk	Lilly Whittaker
Allison Nickels	Kristin Pipoly	Bonnie Robbins	Gayle Sikula	Teen Challenge Team	Dale Wiechelmann
Kai Nielsen	Karmin Pirc	Malik Roberson	AnDao Silbaugh	Bryan Thomas	Sue Wilcosky
Kristin Nielsen	Platinum CLEagents	Brandon Robinson	Glen Silbaugh	Amber Thomas	Phyllis Wilcox
Nicole Niemeyer	Zachary Pohto	Andy Rose	Jared Silvey	Yvonne Delgado Thomas	Kristina Willey, PhD
Amy O'Brien	Rebecca Pompils	Dan Rowles, Jr.	Danielle Sindelar	Jeff Thompson	Winter Equipment Team
Alycia O'Connor	Todd Porcelllo	Dan Rowles, Sr.	Michelle Sisler	Colton Thompson	Joann Wirtz
Brennon O'Connor	Sarah Powell	Ann Rzepka	Christopher Skubby, PhD	Catherine Thompson	Maggie Wolf
Natalie O'Brien	Charlene Powers	Mara Sabo	Nick Sladek	Amy Thuer	Dana Wolfe
Jaydon O'Connor	Aryn Preston	Russ Sagha	June Sladek	Alexis Tilton	Gayle Woodrow
Lydia O'Connor	Dave Price	Shambhavi Sajeev	Sheri Slater	Allison Tintera	Paola Wooten
Seth Oldham	Mel Prileson-Douglas	Craig Sams	Maritza Slattery	Summer Torok	Tiffany Wurts
Julie O'Neil	Laurie Principe	George Sari	Paige Sloan	David Torre	WWLCCC Team
Orbis Team	Mary Pritschau	Alex Sari	Gary Smeal	Beth Tozzi	James Wyman
Jessica Orlic	Rafe Proctor	Kathy Sau	Erica Smeal	Alyssa Tracey	Jen Yoriko
Rhonda Osage-Erese	Progressive Team	Phil Schar	Cindy Smith	Paul Tretter	Rylee Zappitelli
Bill Oskowski	Caitlyn Pushey	Jeff Schick	Eric Smith	Joey Trivisonno	Diana Zarawitz
Cristina Pacheco	Maddy Rackovan	David Schick	Andrew Smyser	Nikki Trivisonno	Therese Zdesar
Zaira Pacheco	Pamela Radisek	Devin Schilling	Finn Smyser	Diana Trubiani	Cathy Zegarac
Chris Page	Leslie Radke	Jenni Schilling	Ben Smyser	Karen Turner	Cathy Zeller
Paul Palagy	Ireland Rainey	KT Schmidt	Josephine Smyser	Theresa Turner	Melissa Zummo
Suzanna Paquin	Julie Ramos	Gary Schmitt	Andrew Somich	Nathan Valentine	
Scot Park	Prensi Rana	Beki Schreiber	Katie Stansberry	Mayor Mike Vanni	
Parker Hannifin Team	Linda Randa Welch	Lorrie Schuck	Stefanek Regalbuto Team	Karen Venture	



# FINANCIALS

## How were UWLC funds used in FYE25?

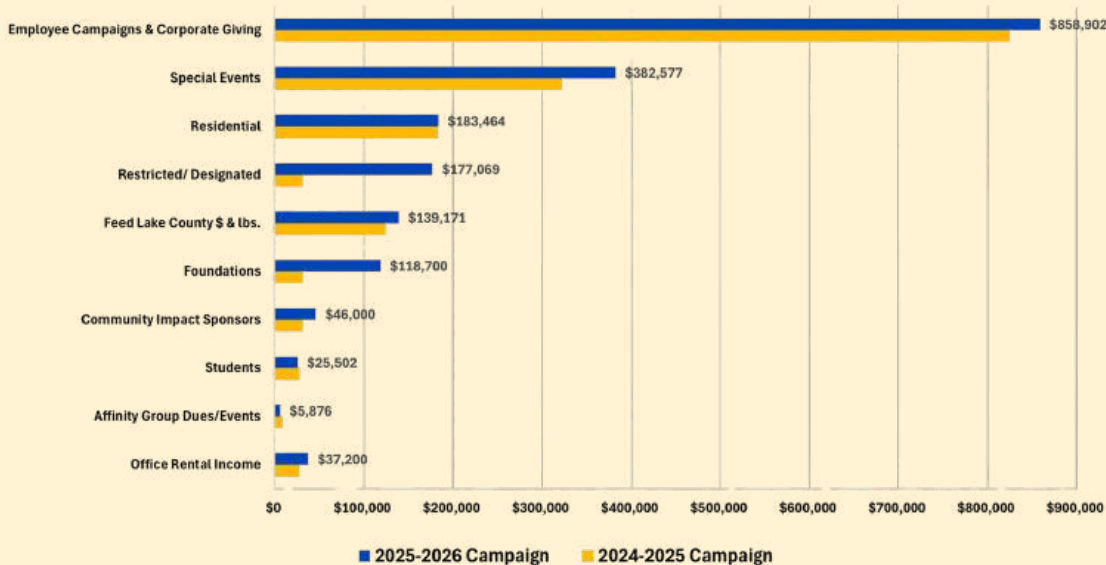


## Where UWLC Funding Comes From

Workplace giving and corporate support remain the backbone of United Way of Lake County's campaign efforts. Employee campaigns and corporate gifts continue to generate more funding than any other source, making their growth essential to sustaining the more than \$1.5 million invested back into the community each year through grants and direct service initiatives. Together, each of these individual support categories demonstrates the power of businesses, employees, and community members coming together to create lasting change across Lake County.

United Way of Lake County holds itself to the highest standards of accountability and transparency. They are proud to have earned the highest possible rating and ranking from three of the nation's most trusted nonprofit evaluators, affirming their commitment to excellence and responsible stewardship.

## Two-year comparison



Scan QR code to view their most recent, full Audited Financial Statements and Form 990



# FUELING OUR MISSION

Through the generosity of sponsors, attendees, volunteers, and community partners, our events collectively generated \$382,577 to help strengthen lives across Lake County.

# \$382,577

## The Bourbon Event: June 26, 2025

UWLC hosted its inaugural Bourbon Event in June 2025, welcoming more than 150 bourbon enthusiasts and supporters to Andrews Osborne Academy. The evening featured a raffle of 100 curated, rare, and allocated bottles, bourbon tastings from popular distilleries, hand-rolled cigars, prize raffles, and a wide variety of food donated by Lake County restaurants.



## Jail & Bail: September 26, 2025

UWLC hosted its third annual Jail & Bail fundraiser aboard a Laketrans bus. Laketrans CEO Ben Capelle operated the themed paddy wagon, where 16 “jailbirds” were apprehended—one by one—across Lake County, complete with handcuffs and a reading of their UWLC rights before being confined to the “jail bus.” The event nearly doubled the amount raised over the previous year.



## Emerging Leaders 4 Under 40 Awards Reception: January 29, 2026

Emerging Leaders of UWLC recognized the recipients of their 2025 “4 Under 40” young professional awards - honoring Lake County’s best and brightest - during an evening reception over appetizers and drinks. A crowd of more than 160 gathered at The Everly in Mentor to celebrate the award recipients.



## Golf Outing: August 29, 2025

Emerging Leaders of UWLC hosted its 12th Annual Golf Outing in support of Lake County youth. Held at Black Brook Golf Course in Mentor, the sold-out event welcomed 144 golfers. The day featured breakfast and lunch, along with on-course games, raffles, beverages, and more, making it one of Lake County’s most anticipated golf outings.



## Women’s Winterfest & Holiday Food Tasting : November 20, 2025

Women United of UWLC celebrated another record-breaking fundraiser at its annual Women’s Winterfest & Holiday Food Tasting, held at LaMalfa in Mentor. The event welcomed more than 530 guests for an evening of holiday cheer, featuring tastings from 27 local restaurants, raffle prizes, Santa Sack Surprises, an enormous wine pull, entertainment, and more. Even Santa made an appearance! Alongside two online raffles, the event delivered a festive and impactful celebration in support of Lake County women and children.



## Celebrity Server: March 13, 2026

Nearly 500 people turned out for UWLC’s largest annual St. Patrick’s Day-themed fundraiser at LaMalfa. A total of 48 volunteers served as Celebrity Servers, raising tips from their guests. Funds were also raised from a variety of raffles, a Table ‘O Sweets, a wine pull, and fun and games. Combined with an online raffle, the event once again set a record for funds raised.



# CAMPAIGN GIVING

1922 Coffee & Brew ~  
 A Thomas Image ~  
**AAA \***  
**Abbott Laboratories \***  
**AbbVie \*#**  
 Achilles Running Shop ~  
 Advanced Insurance Solutions  
 - June Sladek ~  
 Advancing Women in the  
 Workforce ^  
 Adventure Subaru ~<  
**Aexcel Corporation \*#<**  
 Aladdin's Eatery ~  
 Alesci's of Shoregate ~  
 All Contractors Supply/  
 RAW Roofing ^  
 Alpha Key Digital ^  
 AmyZing Bell Boards ~  
**Andrews Osborne Academy \*~**  
 Anne Cate ~  
 Anthony's Family Restaurant ~  
 APEX Dermatology ~  
**Applied Industrial \***  
 Applied Laser Technologies ^  
**Aqua Ohio \*#<^**  
 Arabica Coffee House ~  
**Ashley Furniture \***  
 Atlas Cinemas ~  
 Auburn Career Center <  
**Avery Dennison \*#<~< \$**  
 Azteca Mexican Restaurant ~  
 B Rox Grill & Swill ~  
 B.K. Electric >>  
 Baby Cakes Bakery ~  
 Bada Bing Pizza ~  
 Ballantine ~  
 Barkstown Grooming ~  
 Beal's Pickles and Pints ~  
 Bella Donna Salon & Spa ~  
 Best Truck Equipment ^  
 Best Version of You ^  
 Bibibop Asian Grill ~  
 Billy's - A Cappelli Martini Bar ~  
 Bistro 70 ~  
 BJ's Restaurant and Brewhouse ~  
 BLKOUT Gym ^  
 Blu Bee Café ~  
 Blue Falls Car Wash ~  
 Blue Lake Cleaning ~  
 BNI The Executive Business Network #<  
 BNI Lake Elite Chapter # <  
 Bob Evans ~  
 Bremec Garden Center of Concord ~  
 Bright Wishes Travel ~  
 Brown Aveda Institute ~  
 Brush Boutique ~  
 Buckeye Chocolate Café ~  
 Burgers to Beer ~  
 Burgess & Niple ^  
 Busy Bees Pottery & Arts Studio ~  
 Buttercream Party ~  
**Buyers Products Company #**  
 C.H.I. Custom Home Improvement ^  
 Cakes By Maria and Joe ~  
 Cakes To You ~

Campola's Italian Bistro ~  
 Cap & Cork ~  
**Cardinal Commerce/Visa \*\$ ~**  
 Casa Rosa Cucina ~  
**Caterpillar \***  
 Cathie's Kitchen Towel ~  
**Catholic Charities \***  
 Chase Bank <  
 Chick-fil-A Mentor ~  
 ChiroLife ^<  
**Citizens Bank \***  
**City of Mentor \***  
**City of Painesville \*~**  
**City of Wickliffe \*~**  
 City of Willoughby <  
 Citywide Solutions & Sterling  
 Protective Services ^  
**Civista Bank \***  
 CLE Carpet Cleaning ~  
 Clean EatZ ~  
 Clean Express Auto Wash ~  
 Clearview Softwash ~  
 Cleveland Aquarium ~  
 Cleveland Art Museum ~  
 Cleveland Auto Wholesale ^  
 Cleveland Browns ~  
 Cleveland Cavaliers ~  
**Cleveland Clinic \*^<**  
 Cleveland Metroparks Zoo ~  
**Cleveland-Cliffs Inc. \***  
 Clicks by Kat ~  
 Club Pilates (Mentor) <  
 CO Forklifts ^  
**Component Repair Technologies\*#<^**  
 Concord Pizza ~  
 Confectionary Cupboard ~  
 Conway Land Title ^  
 Corning Wellness & Restorative Health ~  
 Costa Oil ~  
 Crave Cookies ~  
**Crossroads Health \*^**  
 Crowley's Painesville ~  
 Crumbl ~  
 Crunch Bakery ~  
 CS Outdoors ~  
 CSL Plasma ^  
**CSX Transportation \***  
 Custom Cleaning and Maintenance ~  
 Custom Spray Tanning by Jen Edgell ~  
 Cuyahoga Valley Scenic Railroad ~  
 D&S Automotive ~  
 Dairy Queen ~  
 Dave's Cosmic Subs ~  
 De John Funeral Homes and Crematory ~  
**De Nora Tech\*#**  
 Deanna Ryan Photography ~  
**Deepwood Foundation \*^**  
 Del Monti's Italian Treats ~  
**Deloitte \***  
**Dillard's \***  
 Dino's ~  
 Doc Howard's Distillery ~  
**Dollar Bank \*^**  
 Don Tequila ~  
 Down the Block ~  
 Drug Mart ~  
 Dworken & Bernstein ^

Dynamic Electronics Solutions ^  
 E. Dake Plumbing and Heating ~  
 East Coast Custard ~  
 Eastern Lake County Chamber  
 of Commerce ~  
**Eaton \***  
 Embers Custom Fireplace & Gas ~  
 Emerald Glen Title ~  
 Empower Chiropractic ~  
 Empower Nutrition ~  
**Enbridge \*#**  
 Enpress LLC ^  
 Erie + Vine ~  
 Erie Zoo ~  
 Exodus Integrity Services ^  
 Expert Nail & Spa ~  
**Express Employment Professionals \*#**  
 Exterior Revival Services ~  
 Fairport Harbor Senior Center <  
 Federales ~  
 Ferrante Winery & Ristorante ~  
**Fifth Third Bank \*< \$**  
 Fine Arts Association <  
 First Federal Lakewood ~  
**First National Bank \***  
**FirstEnergy Corporation \***  
**Fischer Special Tooling \*#**  
 Fit 4 Life Physical Therapy ~  
 Fit4Moms ~  
 Flavors Around the Square ~  
 Food For Thought ~  
 Forbes House ~  
**Fredon ^~**  
 Froyo Twist ~  
 Furniture Warehouse Ohio ~  
**General Electric \***  
**Giant Eagle \*#~**  
 G-licious Pizza ~  
 Glowjobs in the Meadow ~  
 Go Glow ~  
 Golden Crust Bakery ~  
**Gould Inc. Foundation #**  
 Grand Canyon University ^  
 Great Harvest Bread Company ~  
 Great Lakes Science Center ~  
**Griffin Technology Group ^@~**  
**H&J Certified Public Accountants \***  
 Happy Moose Bar & Grill ~  
 Hard Truth ~  
 Hartville Golf Carts ~  
 Heiland Electric #<^  
**Heinen's \*~**  
 Hellreigel's Inn ~  
 Holden Forests and Gardens ~  
 Home Depot ~  
 Home Instead Senior Care ~  
 honeygrow ~  
 Hooley House ~  
 How Money Works Learning Center ~  
 Howard Hanna - Jenifer Black ~  
**Huntington National Bank \*#~\$<**  
**Hynes \*#**  
**Hyster-Yale Materials Handling \***  
 I Love You to the Moon and Back Bakery ~  
**IBM Corporation \***  
 Imperial Dragon ~  
 Irby Utilities <

It's So You Boutique ~  
**ITW National \***  
 J Marie's Salon \*#  
 Jackpot Street Food ~  
 JCPenney ~  
 Jen Smyke Photography ~  
 Jennifer & Co. ~  
 Jet's Pizza ~  
 Jimmy John's ~  
 Joey's Italian Grill ~  
 Johnson Orthodontics <  
**Jones Day \***  
 J's Pizza Market ~  
 JTO, Inc. ^  
 Junie Balloonie ~  
 Just Natural Provisions Co. >  
**Kalcor Coatings Company \*#<**  
 Kevin Kilfoyle State Farm <  
**KeyBank \*#^~**  
 Kidney Foundation of Ohio ^  
 Kings Island ~  
**Kirtland Schools \***  
 Kirtland Veterinary Hospital ~  
 KJ Fasteners \$  
**KPMG Gives \***  
 Kucera International <  
 Kuhar's ~  
 Kurtz Bros. ^  
 Ladies & Gentlemen Salon and Spa ~  
 Lake Cleaning Authority ~  
**Lake County ADAMHS \***  
**Lake County Board of DD \*< \$**  
 Lake County Captains ~  
**Lake County Council on Aging \*^**  
**Lake County Domestic Relations Court \***  
 Lake County Economic Development  
 Council ^  
 Lake County Employees Federal  
 Credit Union <  
**Lake County Free Clinic \*~**  
**Lake County General Health District \*<**  
**Lake County Government \***  
**Lake County Job and Family Services \***  
**Lake County Planning and Community  
 Development \***  
**Lake County Probate Court \*~<**  
 Lake County Retired Teachers  
 Association <  
**Lake County YMCA \*~<**  
**Lake Development Authority \***  
 Lake Erie College ~<  
 Lake Erie Dart Association ^  
 Lake Erie Distillery ~  
**Lake Metroparks \*^<**  
 Lake-Geauga Habitat for Humanity ~<  
**Lake-Geauga Recovery Centers \*< \$**  
**Lakeland Community College \*^**  
**Laketrans \*^<**  
 Layton Physical Therapy <  
 Legal Aid Society <  
 Leolo Hospitality ~<  
**Lifeline for the Empowerment and  
 Development of Consumers \*<**  
**Lighthouse Advisers #<^@~**  
 Lil Sneakers University <  
**Lincoln Electric \*#**  
 Little Scholars Early Learning Center <

Long John Silver's ~  
 Longhorn Steakhouse~  
 Longo's Pizzeria ~  
 Lowe's Home Improvement ~  
 Lucy's Laser and Medspa ~  
 Lulu C's Floral Design ~  
 Lux Balloons ~  
 Luxe ~  
 M.W. Beverage, Inc. #@~  
**Madison Local School District \***  
 Madison Tap House ~  
 Maliboo Clothing ~  
 Manhattan Deli ~  
 MarBal < \$  
 Marlowe Appraisals ^  
 Marlowe Team Keller Williams ^  
 Marous Brothers Construction <  
 Mars Electric ~  
 Mary Kay ~  
 Master Pizza Eastlake ~  
 Max Strength Fitness ~  
 Mean Mugs Pub ~  
**Meijer \*-**  
 Mentor Area Chamber  
 of Commerce ~<  
 Mentor Cleaning Authority ~<  
**Mentor Nissan ^@~<**  
**Mentor Public Library \*#~<**  
**Mentor Public Schools \*#~<**  
**Mentor Rotary Foundation # \$**  
 Mentor Senior Center <  
 Mimi Magazine ~  
 Mission BBQ ~  
 Mopsters Cleaning <  
 Morley Library <  
 Morris Chiropractic ~  
 MUM Industries <  
 Music Box Supper Club ~  
**Nationwide Insurance \*#**  
 NedleyMac Consulting <  
 Neo Pizza ~  
 Ninja Sushi & Hubachi ~  
 Nonna T's Italian Restaurant ~  
 Northcoast Laser Medspa ~  
 Northstar Towers #^  
 Nothing Bundt Cakes ~  
 Nouveau Bistro & Lounge ~  
 Oakridge Landscaping, Co. ~  
 OH Technologies #  
 Ohio Living- Breckenridge  
 Village <  
 Ohio Northeast BNI #  
 Olympus Aerospace ~\$  
 Once Upon a Wish Travel ~  
 Orange Theory Fitness ~  
**O'Reilly Auto Parts \***  
 Originals by Julie ~  
 Outback Steakhouse ~  
 Painesville City Improvement Corp.  
 and the Blue Shirt Group ~  
**Painesville City Local Schools \***  
 Panini's Bar and Grill ~  
 Parker Hannifin # \$  
 Patterson Fruit Farm ~  
 Paul Davis Restoration ^  
 PCC Airfoils <  
 Penn Station ~  
**Peoples Bank \*#**  
 Perkins Restaurant and Bakery ~  
**Perry Local Schools \*^**

Pet Hospital of Willoughby <  
 Pet Supplies Plus ~  
 Pickle Ball Play 365 ~  
 Pickle Bill's Lobster House ~  
 Pine Lake Tennis Club ~  
 PIP Printing ~  
 Platinum CLE Agents \$  
**PNC Financial Services Group \***  
 Power Yoga Collective Mentor ~  
 Prelude Photography ~  
 Pub 1812 ~  
 Pub Frato ~  
 Purposeful Beauty ~  
 Quail Hollow Country Club ~  
 Rabbit Run Theatre ~  
 Raising Cane's ~  
 Ranpak <  
 Rea Advisory \$  
 Red Lobster ~  
 Red Robin Gourmet Burgers  
 & Brew ~  
 Redhawk Grille ~  
 Rego's Brickhouse Pizzeria ~  
 Rehmann ^  
 Rhino Mobile Detailing ~  
 Rideouts IGA ~  
 Ridgewood Kitchen & Spirits ~  
 Riverside Local Schools Board  
 of Education <  
**Rockwell \***  
 Rooted and Rising Pilates ~<  
 Round1 ~  
 Rounder's Lounge ~  
 S&T Bank ^  
**SABIC \*#**  
 Sage Karma Kitchen ~  
 Sage's Apples ~  
 Salvation Army ~  
 Sammy K's ~  
 Savoria Bar & Grill ~  
 Scramblers ~  
 Second Sole ~  
 Secure Recycling ^  
 Select Jewelers ~  
 ServPro ~  
 Sheetz Mentor <  
 Shepphaven LLC ~  
**Sherwin Williams \*#**  
 Signature Health ^  
**Singerman, Mills, Desberg, &  
 Kauntz Co LPA \***  
 SMART #33 ~  
 Smoke BBQ Grill ~  
 Smokey Bones ~  
 Smoothie King ~  
 SoBern Journey ~  
 SOL ~  
 Somich & Associates ^  
 Sophia Boutique ~  
 Spuddy's Tavern ~  
 Standing Rock Farms ~  
 Stani's Family Restaurant ~  
**Stanley Black & Decker \*#**  
 Stanley Steemer ~  
**Starting Point \***  
 Stefanek Regalbutto CPA \$  
 Stefanik Iosue & Associates ^  
 Stella's Art Gallery <  
**STERIS \*#<** ^  
 Subway ~

Sugar Bomb Cookies ~  
 Sugar Mama Cannoli Cart ~  
 Sunbright USA >  
 Sunny Street Café ~  
 Sunray Window Films ^  
 Sweet Street Desserts ~  
 Sylvestro's Depot Café ~  
**Target \*-**  
 Tavern Six ~  
 Tec, Inc. ~  
 Texas Roadhouse ~  
 The Cleaning Authority of Mentor,  
 Broadview Hts, & Medina ~<  
 The Enlightened Lotus ~  
 The Hooley Pub & Kitchen ~  
**The Kilbourne Family ^@~**  
 The Klammer Law Office, Ltd. ~<  
**The Lubrizol Corporation \*#**  
 The Malish Corporation ^@  
**The Middlefield Banking Company \*#^**  
**The Mill-Rose Company \***  
 The News-Herald ^  
 The Original Mario Fazio's ~  
 The Paquin Company ^  
 The Pompadour ~  
 The Posh Pet Boutique & Grooming ~  
 The Selfcare Collective ~  
 The Stone Team Realtors at Century  
 21 HomeStar ~  
 The Subzero Mission ^  
 The Sugar Bomb Cookies ~  
 The Wagon Wheel ~  
 The Wellness Connection ~  
**Thompson Hine LLP \***  
 TJ's On The Avenue ~  
 Toadal Positivity ~<  
 Tomi Japanese Steakhouse ~  
 Tommy Boys Pub ~  
 Torchlight YMA <  
**Torque Transmission \*#**  
 Tour Lake County ~  
 Trader Jack's ~  
 Trader Joe's ~  
 Travel Beyond the Magic ~  
**Tremco Incorporated \***  
 Trevi Catering ~  
 Tryst Salon ~  
 Two Men and a Truck >>  
**United Way of Lake County \***  
**University Hospitals \*-**  
 Vector Aviation ~  
 Veloz Landscaping ^  
 Vincent William Winery ~  
 Vineyard Woods~  
 Vipassana Salon and Spa ~  
 Visiting Angels of Northeast Ohio #>  
**Vistra \*#^**  
 Vitalone Towing ^  
 Vittorio's Buon Appetito ~  
 VODA ~  
 Walmart ~  
 Water Extraction Team (W.E.T.) ~<  
 We Rock the Spectrum Gym ~<  
 Wellness Connection ~  
**WesBanco\*#**  
 Westel's Speakeasy & Cocktail Bar ~  
**Wickliffe City School District \***  
 Wickliffe Public Library ~<  
 Willoughby Hills Auto Repair #^<

**Willoughby Western Lake County  
 Chamber of Commerce ~< \$**  
 Willoughby-Eastlake Public Library ~<  
**Willoughby-Eastlake Public Schools \***  
 Willow Wash Car Wash <  
 Winter Equipment < \$  
 Wood Road Salad Farm ~  
 WyattWorks Plumbing ~  
 X-Press Printing ^  
 Zappitelli's ~  
 Zoup! Eatery ~



While every effort has been made to ensure the accuracy and completeness of this listing, we recognize that unintentional omissions or errors may occur. We sincerely apologize for any oversight and appreciate the generosity of all of our supporters and corporate partners.

## Campaign Giving Legend

- Employee/Student Campaign \*
  - Blue: Campaign + corporate and matching gifts exceeds \$10,000
  - Gold: Largest employee campaign
- Corporate Gift #
- Small Business United >
- Community Sponsor ^
  - Red
- UWLC Signature Event Sponsor ^
- Bourbon Backer @
- In-Kind Donation and/or Raffle Donor ~
- Feed Lake County Food Drive <
- Day of Caring Team \$
- Other Direct Service Support ^

# LEADERSHIP GIVING SOCIETY



## Alexis de Tocqueville

\$10,000+

Friends of UWLC  
Morris W. Beverage III  
Richard J. Frey  
The Kilbourne Family

## James A. Garfield

\$5,000 - \$9,999

Friends of UWLC  
Karen Burton  
John Calhoon  
Tina Hart  
Edward Hribar  
Brian and Cathy Humphrey  
William R. Jones  
Elfriede Roman

## Lighthouse

\$2,500 - \$4,999

Friends of UWLC  
Vikas Arora  
Elaine Barnard  
Dr. Stephen and Robin Baum  
Josh and Aimee Bogner  
Lindsay Flannery

Michelle Graf  
Christopher Johnson  
Teri Lilley  
David Mele  
Eric Pohl

Chris & Bill Robertson  
Calvin Schroeck  
Christopher Skubby, Ph.D.  
Thomas Votava  
Robert Wehrle  
Susan Witherite

## Leadership

\$1,000 - \$2,499

Friends of UWLC  
Linda Bednar  
Darin Benyak  
Robert W. Blank  
Lauren L. Brandon  
Michael Brockman  
Michael Brogan  
Rick Bumgardner  
Joseph Caine  
James Callender  
Thomas and Pamela Cirino  
Donald Daut  
Julie Dean  
John Dellaria  
Barry and Susan Deming  
Dione DeMitro  
Carl DiFranco

Stephanie A. Fleming  
Kimberly Garren-Hudson  
Todd Johnson  
James Kavulich  
Ronald Kinkade  
William H. and Kathy Kinner  
Brian Knapp  
Shaun Kozlowski  
Kevin Kuhar  
Thomas and Maria Kula  
Raymond F. Leanza  
James D. Levine  
Douglas Lewis  
Gregory P. Lieb  
Nicholas Lieb  
Jerry and Sue Mancino

Maria Manocchio  
Steven Marks  
Laura Mather  
Robert McClary  
Rita McMahon  
Matthew Messenger  
George Milbourn  
Elizabeth Miller  
Latham W. Murfey III  
Raymond and Mary Murphy  
Cheryl O'Brien  
Mark Pattison  
John and Joyce Petric  
Robert and Anne Marie Petti  
David Radachy  
Matthew Renfro

Steven Rogers  
Ronald Scheidecker  
Jerome Micco and Patricia Schraff  
Michael Skunda  
Diana Smirnova  
Vivian Smith  
Mary Gayle Smith  
Richard Stavar  
Scott Super  
Mark and Annette Sutherland  
Frank Tomaselli  
Robert and Susan Vaughn  
Kristina Willey PhD  
Jon and Linda Younker  
Dr. Robert H. and Susan J. Vaughn  
Anderson Family Foundation  
Sarah Lamade White Foundation

“You have not lived today until you have done something for someone who can never repay you.”

— John Bunyan

# AWARDS

## Gus Gehring Award

This award was established in 2000 in tribute to Richard "Gus" H. Gehring, a distinguished member of United Way of Lake County's board of directors. It stands as UWLC's premier recognition for exemplary volunteerism and advocacy efforts.



### Honoree

Richard J. Regovich (1967 - 2025)  
Lake County Commissioner

## Matt Logies Ambassador Award

This award was established in 2011 in honor and memory of former UWLC board member Matt Logies. The award stands to honor those who embody outstanding community service, the foundation upon which UWLC is built.



### Honoree

Christine Margalis  
Lake County General Health District

## Power of One Award

This award winner epitomizes the profound impact that a single individual can make in effecting positive change within Lake County.



### Honoree

Kai Nielsen  
Our Future ReUse

## Woman Leader of the Year Award

This award recognizes the highest standards of female achievement, encapsulating the purpose of Women United and displaying excellence in leadership and accomplishments.



### Honoree

Christine Weber  
Mentor Area Chamber of Commerce

## Emerging Leader of the Year Award

This award honors a new generation of leaders and celebrates an individual with admirable leadership skills and a commitment to encouraging positive development among Lake County's youth while fostering tomorrow's leaders.



### Honoree

Leslie Radke  
Touring and Cruises

## Legacy Award

This award honors individuals whose legacy of service, influence, and impact continues to inspire UWLC's work and community.

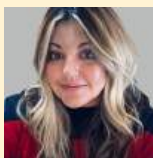


### Honoree

Anthony Brzytwa (1983 - 2025)

### Ashley Cozzens

Lake County  
Board of DD



## 4 Under 40 Award Winners

The Emerging Leaders' 4 Under 40 Awards honor our community's next generation of leaders. The awards pay tribute to Lake County's best and brightest young professionals for their hard work and achievements in the areas of leadership, community involvement, entrepreneurship, and professional accomplishment.



### Brandon Morse

Furniture  
Warehouse Ohio



### Joel DiMare Jr.

Lake County  
Commissioner's Office

### Zerina Hutchinson

FIT4MOM  
Lake County





**UNITED WAY OF LAKE COUNTY**  
UNITED WE THRIVE.

[uwlc.org](http://uwlc.org)  
440.352.3166

9285 Progress Pkwy.  
Mentor, OH 44060